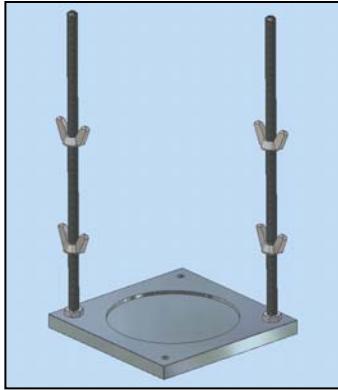


Compaction Molds for M+DI Applications

Assemblies and parts available for compaction molds related to the use of the M+DI—depending on Customer’s needs.

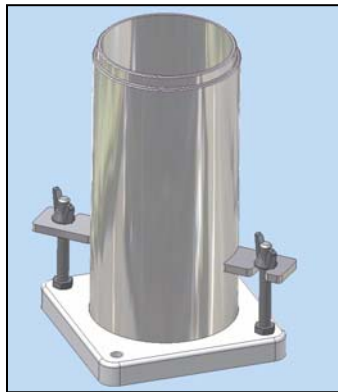
Assemblies and Parts Listed in the Calibration Accessories Kit MD-2100



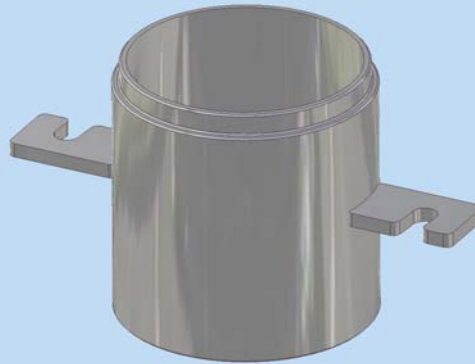
601552 — Steel Base w/ Long Threaded Rods.

Will accommodate the 9-in mold (601450) or 4-in mold (601551) plus the std 4-in mold collar (S-32011)

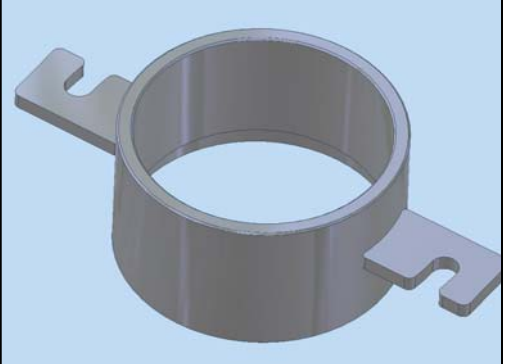
Additional Assemblies and Parts



601451 — 4x9-in MDI Mold, non-conductive base.



601551 — 4 x 4 in Stainless Steel Mold Body



S-32011 — Std 4-in Mold Collar