

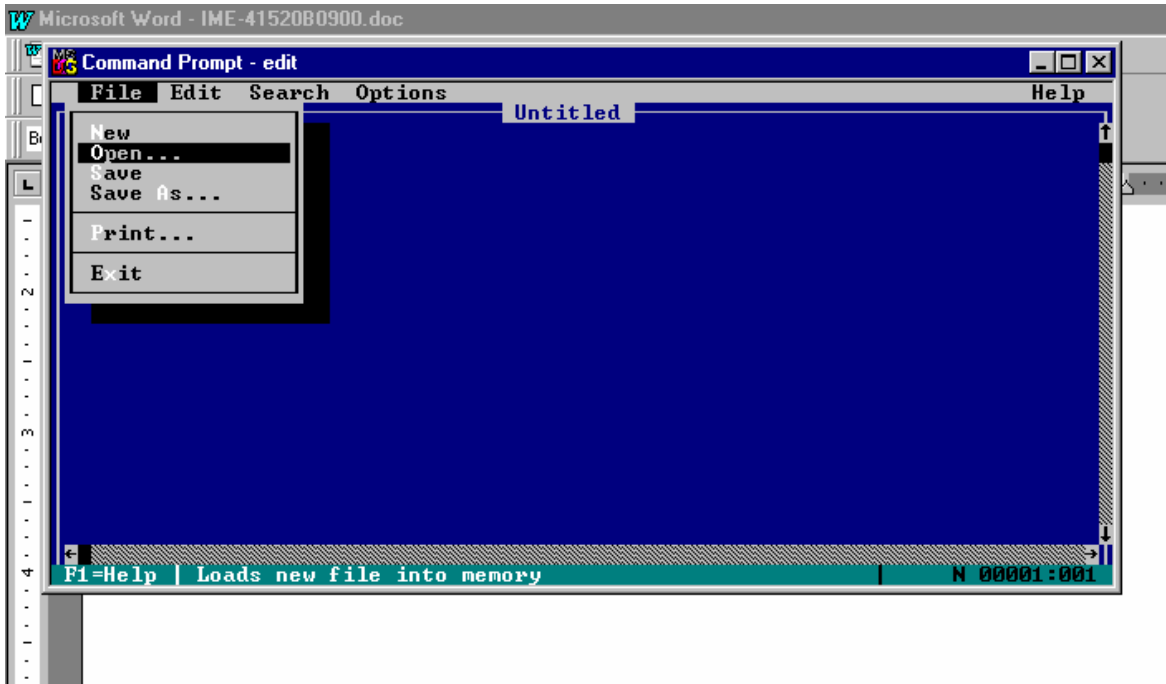
You will now need to edit your **config.sys** file to load **ANSI.SYS** for your start up configuration system:

To do this, select **Start** on the lower tool bar, select **Programs**, select **MS DOS prompt**. At this point you should see a Dos screen with a C:> (Prompt).

Type **CD\** and press **Enter**, this will move you to the top level.

Type **EDIT** and press **Enter**.

Press **ESC** and select **File** on the MS Dos command prompt edit screen.



Now you can open the config.sys file.

Select File Open.

Type in **CONFIG.SYS** into the File Name: Box. You should now see the contents of the config.sys file; you will not necessarily have any devices in this file. Check the top of the screen and insure it reads CONFIG.sys. The device driver Ansi.sys can now be loaded, check the list below to determine which device to load.

**For:**

**Type in the following**

Windows 95 & 98:

Device=C:\windows\command\ansi.sys

Windows 3.1

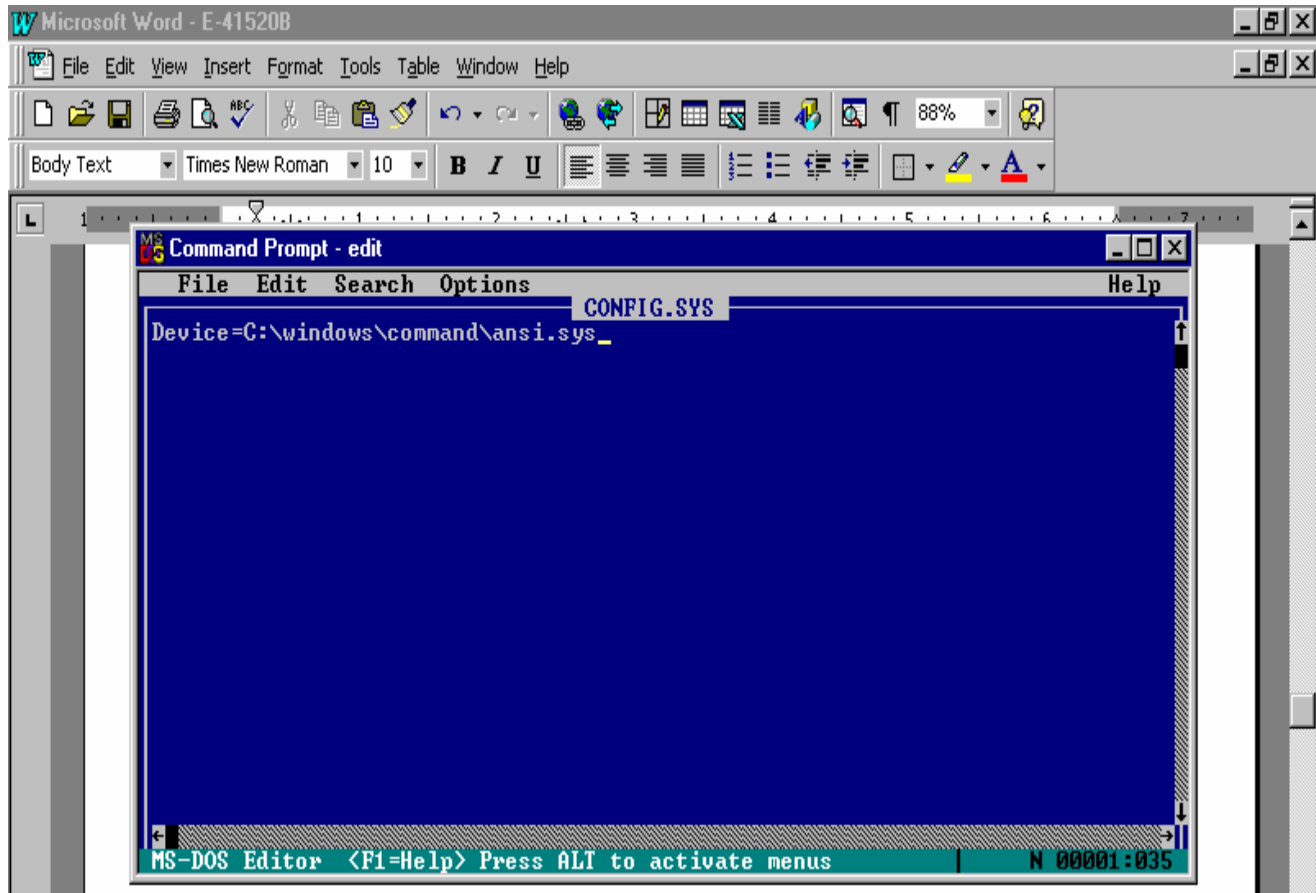
Device=C:\dos\ansi.sys

**NOTE: For windows NT ( You will need to edit the Config.NT file, located in Winnt\system32)**

Win NT 4.0 SP 6

Device=C:\winnt\system32\ansi.sys

The screen on page 8 has the ansi.sys device code for windows 95 or 98



Select **File**, **Save** and then **File**, **Close**. At the Dos prompt type **Exit** and **press Enter**. You will need to restart your computer in order for the changes to take effect.