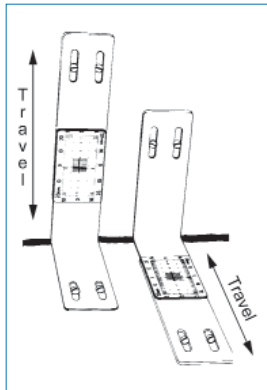
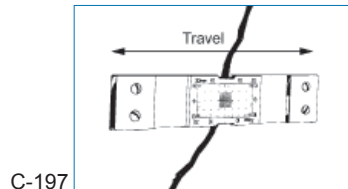


Crack Monitor

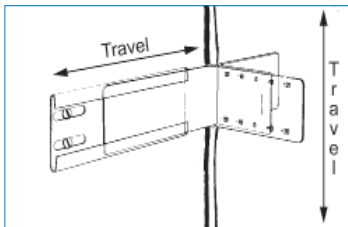
Detect and record movement of cracks in concrete, brick or masonry structures with these simple to use and inexpensive devices. They consist of two overlapping acrylic or rigid PVC plates. One plate is marked with a millimeter grid, the other with cross hairs centered over the grid. Once installed, any movement can be easily seen and recorded on the Crack Progress Chart which is included with each Crack Monitor.



C-19702



C-197



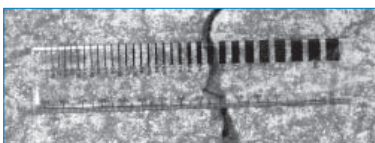
C-19704

C-197	Standard Crack Monitor	1 lb
C-19702	Corner/Floor Crack Monitor	1 lb
C-19704	Displacement Crack Monitor	1 lb

Specifications for Crack Monitors	
Overall size:	1.25 x 5.75 x 0.25 in (3.2 x 14.6 x 0.6 cm)
Plate length:	4 in (10.2 cm)
Grid size:	1.5 x 0.75 in (3.8 x 1.9 cm)
Discrimination:	0.5 mm
Max. width movement;	0.75 in (20 mm)
Max. vertical movement:	0.375 in (10 mm)
Coeff. therm. expansion:	3.80×10^{-5} in/in/°F (6.84 x 1 ⁻⁵ mm/mm/°C)

Crack Width Gauge

C-198 Crack Width Gauge is used to measure crack widths up to 7 mm wide on one scale and up to 160 mm on the other scale. For surveying damaged buildings and pavements.



C-198

C-198	Crack Width Gauge (acrylic)
-------	-----------------------------

Electronic crack meters, strain gauges and data loggers are available. See www.SlopeIndicator.com or call us for details.

Concrete Test Hammers

ASTM C 805

Model C-500 is an Impact-type Concrete Test Hammer which tests in-place compressive strength within a range of 1500 to 8,000 psi (10 - 55 MPa). The hammer is placed on the test surface and impact force is released. The rebound value is noted and compared to a supplied table. Set includes hammer, rubbing stone, canvas case, instructions and calibration curves.



C-500

Model C-506 is a Digital Concrete Test Hammer which features automatic calculation and LCD screen display of the mean rebound number. It indicates the following in two digit figures:



C-506

- Impact Number
- Rebound Number
- Average Value
- Mean Value

The data may be displayed in one lot after all the measurements have been taken. The hammer has an impact energy level of 1.6 lbf-ft (0.225 kg·m) and comes with a carborundum stone and carrying case. Uses 4 "AA" batteries.

C-500	Concrete Test Hammer, Impact	6 lb
C-505	Concrete Test Hammer, Digital (without printer)	13 lb
C-506	Concrete Test Hammer, Digital	16 lb

Related Items

C-50010	Rubbing Stone
C-50020	Calibration Test Anvil

Vapor Emission Kit

Calcium Chloride Vapor (Moisture) Emission Test Kit is used to determine the dryness of a concrete floor prior to applying a covering.

The vapor kit contains the following items:

- (3) Clear, plastic, self-adhesive domes.
- (3) Anhydrous Calcium Chloride desiccant cartridges (individually packaged & sealed).
- (1) pH Test Kit for concrete.
- Instructions and recording log/calculation worksheet.



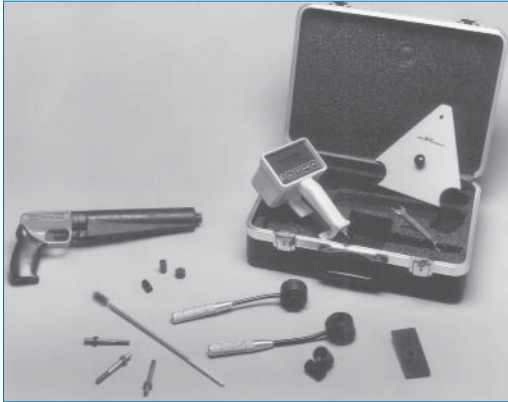
C-566

C-566	Vapor Emission Kit (pack of 3)
-------	--------------------------------

Windsor Probe Test Systems

ASTM C 670, C 803

The Kit provides the driver gun, templates for guiding the fired probe gauge and a graph to evaluate results. A Moh's Hardness Scratch Test Kit is also included. It is supplied in a carrying case.



C-510

The probe gauges are supplied separately as kits of 3 or 25 with matched explosive power loads:

- Silver Probe Kit certified for testing coarse, natural stone aggregate (standard weight concrete), having a density greater than 125 lb/ft³ (2.00 g/cm³).
- Gold Probe Kit certified for lightweight aggregate such as expanded shale and having a density less than 125 lb/ft³, (2.00 g/cm³).

Windsor Probe Test System		
C-509	Windor Probe Test System, Standard	18 lb
C-510	Windor Probe Test System, with Readout	18 lb
C-520	Silver Probe Kit, 3 packets	1 lb
C-520-25	Silver Probe Kit, case of 25 packets	8 lb
C-530	Gold Probe Kit, 3 packets	1 lb
C-530-25	Gold Probe Kit, case of 25 packets	8 lb
Related items		
C-500	Concrete Test Hammer, Impact Type	
P-411	Round Brush	

R-Meter MK III Rebar Locator

ACI 318, BS 1881 #204, DIN 1045, CP 110, EC 2, SIA 162, DGZIF B2.

The rugged R-Meter MK III utilizes the latest in eddy current sensing and micro-processor technology to accurately locate, determine depth, and estimate diameter of metal objects in concrete.

It is not influenced by small metal particles in the concrete, whether the concrete is fresh or hardened, wet or dry. The eddy current sensor allows the unit to locate ferrous and non-ferrous metals in concrete, thereby finding steel accurately reinforcing bars, tendons, copper tubing, conduit and more.



C-558

- Eddy current sensor design for greater accuracy
- Single sensor for all depth ranges
- Locates rebar, post tension cable, conduit and copper pipe
- Determine bar size up to 4.5 in (115 mm) deep
- Rugged and splash resistant case
- Locates up to 8 in (200 mm) deep

Memory capacity: 80,000 data points

Battery life: 4–6hrs continuous run time.

Recharging voltage: 18 V.

Size: (L x W x H)

Basic Unit: 10.63 x 9.68 x 4.88 in (27 x 24.5 x 12.4 cm).

Probe: 5 x 2.4 x 1.6 in (12.7 x 6 x 4.1cm).

Scan Cart: 8.25 x 5.6 x 2.25 in (20.1 x 14.2 x 5.7 cm).

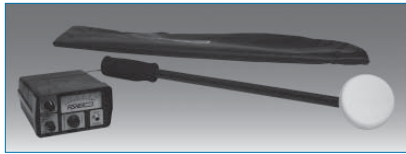
C-558	Basic unit	6 lb
C-55810	Basic Unit with software	
C-55820	Scan Cart upgrade (turns the C-558 Basic unit into a complete system)	
C-55830	Complete system	

Kit Components:

	C-558	C-55810	C-55820	C-55830
C-55801 Main Unit	■	■		■
C-55802 Probe	■	■		■
C-55821 Scan Cart			■	■
C-55822 Extension Rod			■ (2 ea)	■ (2 ea)
C-55803 8 ft Cable	■	■		■
C-55823 12 ft Cable			■	■
C-55806 Headphones	■	■		■
C-55804 Sizing Template	■	■		■
C-55805 Charger	■	■		■
C-55812 Basic Software		■		■
C-55824 Scanning Software			■	■
C-55811 RS-232 Cable		■		■

Rebar Locator

The instrument is used to locate rebar, conduit pipe or other metallic objects in concrete or non-metallic structures. Adjustable controls are provided for sensitivity, sound volume and depth of penetration. Audio and visual (meter) indications of detection are provided. It is capable of detecting the precise location and definition of a 1/2 in (13 mm) rebar at up to 8 in (20 cm) deep in concrete. Sensitivity: 0.2 mV RMS for full scale. Output: Meter and speaker or optional headphones. Power: ± 9 V (12 x 1.5 V AA batteries).



C-550

C-550	Rebar Locator	5 lb
-------	---------------	------

Moisture Meter

Uses a high-frequency capacitive sensor to sample material and measure moisture in most solid materials. Color coded LED indicates moisture condition. Two modes of operation: Pin Mode for low density materials and Search Mode for high density materials. Measures moisture content in concrete, masonry, hard woods, soft woods, gypsum and brick. Alarm values can be set by user.



C-564

Measurement range: 0-80.0%
Resolution: 0.1%
Temperature range: 0° - 50 °C
Size: 6.5 x 2.4 x 1 in (165 mm x 62 mm x 26 mm)
Weight: .4 lb (6 oz). Operates on four "AAA" batteries.

C-564	Moisture Meter	1 lb
-------	----------------	------

Portable Moisture Meter with Probe

Microwave technology is used to measure the content of sand, aggregates and other coarse grained materials up to 25 mm dia. having moisture content up to 20% by weight. Powered by 4 "AA" batteries, the unit can store up to 150 readings and download to a PC via RS-232 interface. Unit comes calibrated for



C-569

both sand and natural aggregate; however, for greater accuracy, the device can be calibrated by the user for specific materials. Accuracy of $\pm 0.2\%$ can be achieved when calibrated for sands. Unit consists of the meter with digital readout and sensor probe.

C-569	Portable Microwave Moisture Meter	4 lb
-------	-----------------------------------	------

Digital Construction Moisture Tester

Resistance-type meter designed to detect moisture level in concrete, masonry, wood, plaster, gypsum, roofing and insulation—virtually any hygroscopic building material. Plastic case and integral 5/16 in (7.9 mm) con-



C-567

contact pins permit easy one-hand operation with fingertip controls. Cable-mounted accessory electrodes with short 5/16-in or long 3/4-in (83 mm) pins and 36-in cable are also available for attachment to the built-in connector. Three separate scales are able to average up to 50 accumulated readings.

Meter measures 7.5 x 3.0 x 1.8 in (191 x 76 x 44 mm).

Short 5/16-in max. penetration pins, as attached to meters or electrodes, are for concrete, brick, wood, plaster, masonry, etc. Order longer 3.25 in pin electrodes for below-surface testing of roof decks or in roof or wall insulation. Contact pins are replaceable in both types and 6 spare short pins are provided with each order. Vol.: 0.1 ft³

C-567	Digital Construction Moisture Meter	2 lb
-------	-------------------------------------	------

Maturity Meter System

ASTM C 1074, C 918

Used to easily and completely monitor fresh concrete to optimize setting time and avoid premature stripping of forms, thus eliminating reworking of un-cured concrete that doesn't meet strength requirements.



C-575

C-57501	Single Channel Maturity Meter System	7 lb
Related Items		
C-57502	Maturity Meter Software w/ RS-232 Cable	
C-57503	Thermocoupler Sensor, 3 ft	

Chloride Test Kit

ASTM C 1202
AASHTO T 277



C-563

This kit measures acid-soluble chlorides in concrete. Chloride ion concentration in concrete is used to determine the need for maintenance on concrete structures. Measures 0.002% to 2% chloride by weight. The digital display shows direct reading of lbs/cu. yd. and percentage of chloride by weight.

The Chloride Test Kit includes:

- Chloride/Temperature combination electrode with cables and connectors
- Electronic meter with temperature compensation circuits for direct conversion to percent chloride
- 12 pre-filled extraction liquid jars and 5 calibration solutions in plastic jars
- Accessory pack: Spray bottle of distilled water, electrode wetting solution, dust collecting pan, clamp, anchors, drill bit, scales, instructions and briefcase

C-563	Chloride Test Kit	10 lb
Related Item		
C-56320	Extraction Liquid, pack of 12 plastic jars, 20 ml	

Corrosion Parameter Analyzer

Used to measure the corrosion rate of steel reinforcement in concrete and several related parameters. The C-562 contains:

- Two sensors
- Connecting cable, 100 ft (30 m)
- The Analyzer, (a verification box)
- RS-232 interface cable
- Communication software
- Carrying case.



C-562

Sensor A is a 7-in (17.8 cm) circular, flat, multiple electrode sensor that allows measurement of corrosion rate by the polarization resistance technique; also measures half cell corrosion potential, concrete resistance.

Sensor B is a hand held multiple sensor probe which measures concrete resistivity, capacitance relative humidity (3 to 95%) and temperature (-10° to 80°C). The instrument will store 100 complete readings with time, date and location code for later downloading to a PC.

C-562	Corrosion Parameter Analyzer	26 lb
Related Item		
C-56240	Jar of Copper Sulphate (30 ml)	

Impact Echo System

Used for measuring the thickness or quality of concrete slabs. The C-570 utilizes impact-generated stress waves that propagate through concrete and are reflected by both the material's external surfaces and internal flaws. Can be used to locate delaminating and voids in concrete slabs and structures. The system consists of transducers, impactor set, transducer spacer, PC software and battery charger. Powered by 12 V. rechargeable battery.



C-570

C-570	Impact Echo System	17 lb
-------	--------------------	-------