

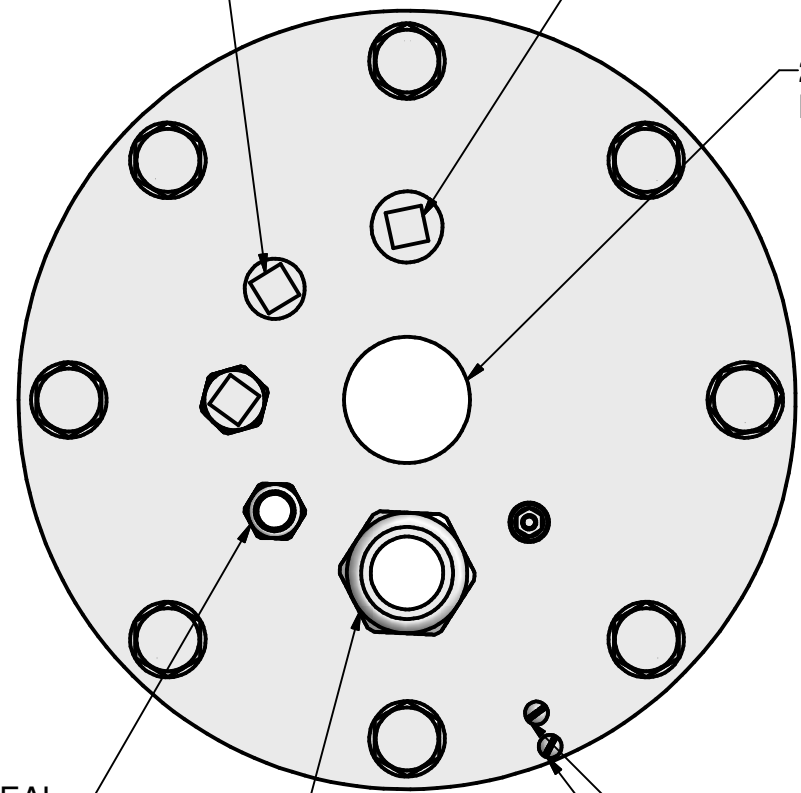
REVISION HISTORY			
REV	DESCRIPTION	DATE	APPROVED
A	RELEASE FOR PRODUCTION	5/28/2008	SWells

B

1/2" NPT WITH NYLON PLUG  
INSTALLED, USE FOR LIQUID  
LEVEL AND OR VACUUM  
MEASUREMENTS

3/4" NPT WITH NYLON PLUG INSTALLED

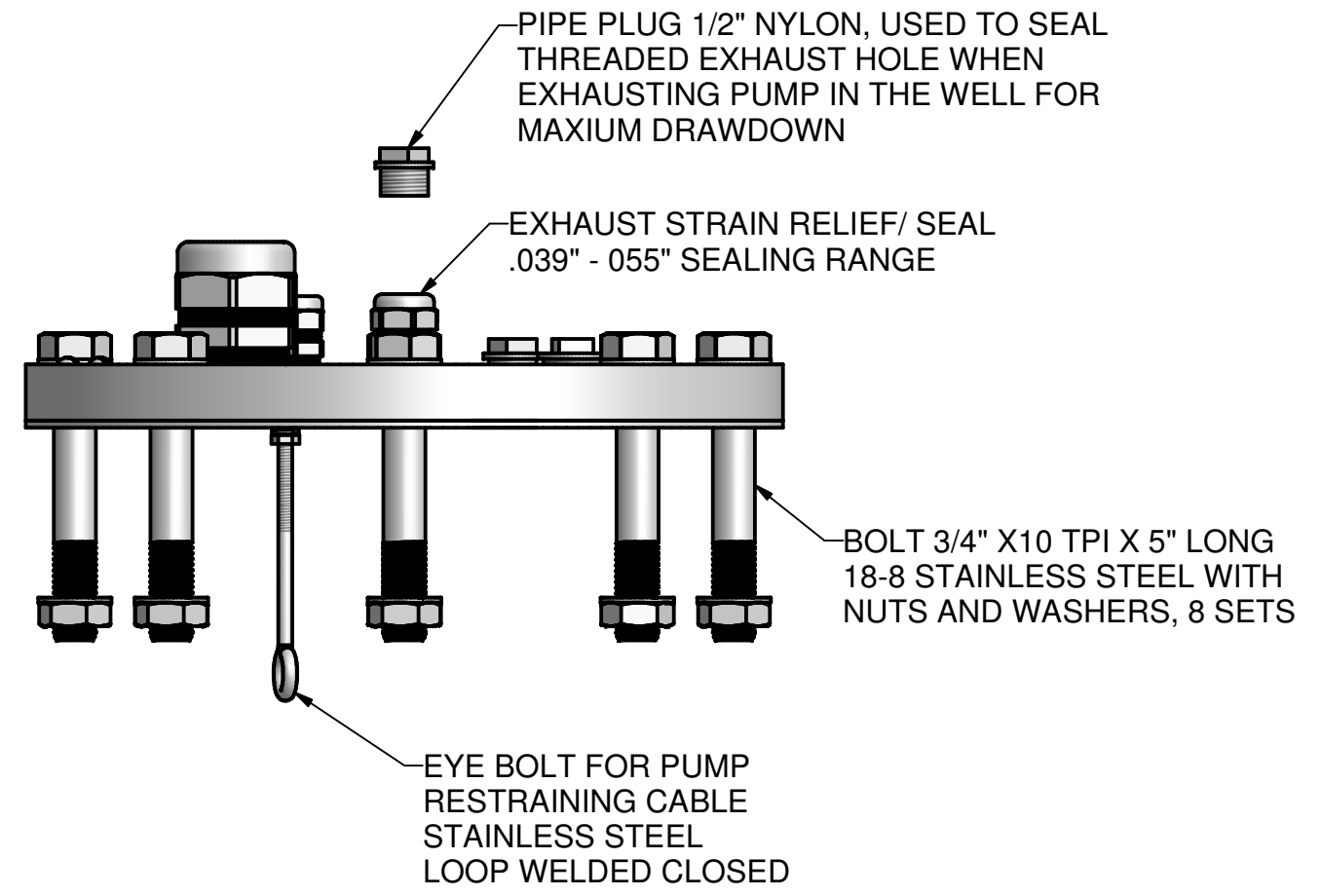
2" FEMALE PIPE THREAD  
NO PLUG SUPPLIED



AIR IN STRAIN RELIEF/SEAL  
0.27" - 0.47" SEALING RANGE

DISCHARGE STRAIN RELIEF/ SEAL  
0.87" - 1.26" SEALING RANGE

SCREWS FOR AIR  
FILTER REGULATOR  
BRACKET



PIPE PLUG 1/2" NYLON, USED TO SEAL  
THREADED EXHAUST HOLE WHEN  
EXHAUSTING PUMP IN THE WELL FOR  
MAXIMUM DRAWDOWN


EXHAUST STRAIN RELIEF/ SEAL  
.039" - .055" SEALING RANGE

BOLT 3/4" X10 TPI X 5" LONG  
18-8 STAINLESS STEEL WITH  
NUTS AND WASHERS, 8 SETS

EYE BOLT FOR PUMP  
RESTRAINING CABLE  
STAINLESS STEEL  
LOOP WELDED CLOSED

A

DRAWN	SWells	5/28/2008
CHECKED		
QA		
MFG		
APPROVED		
STOCK NUMBER		
PLUG SEALS		


**DGS** Durham Geo Slope Indicator  
 2175 West Park Court  
 Stone Mountain, GA 30087

TITLE  
**TR-27604, 8" FLANGE SEAL WITH 2"  
 FNPT ASSEMBLE**

SIZE	.X +/- .030 .XX +/- .010 .XXX +/- .004	DWG NO	603208	REV	A
------	--	--------	--------	-----	---

4

3

2

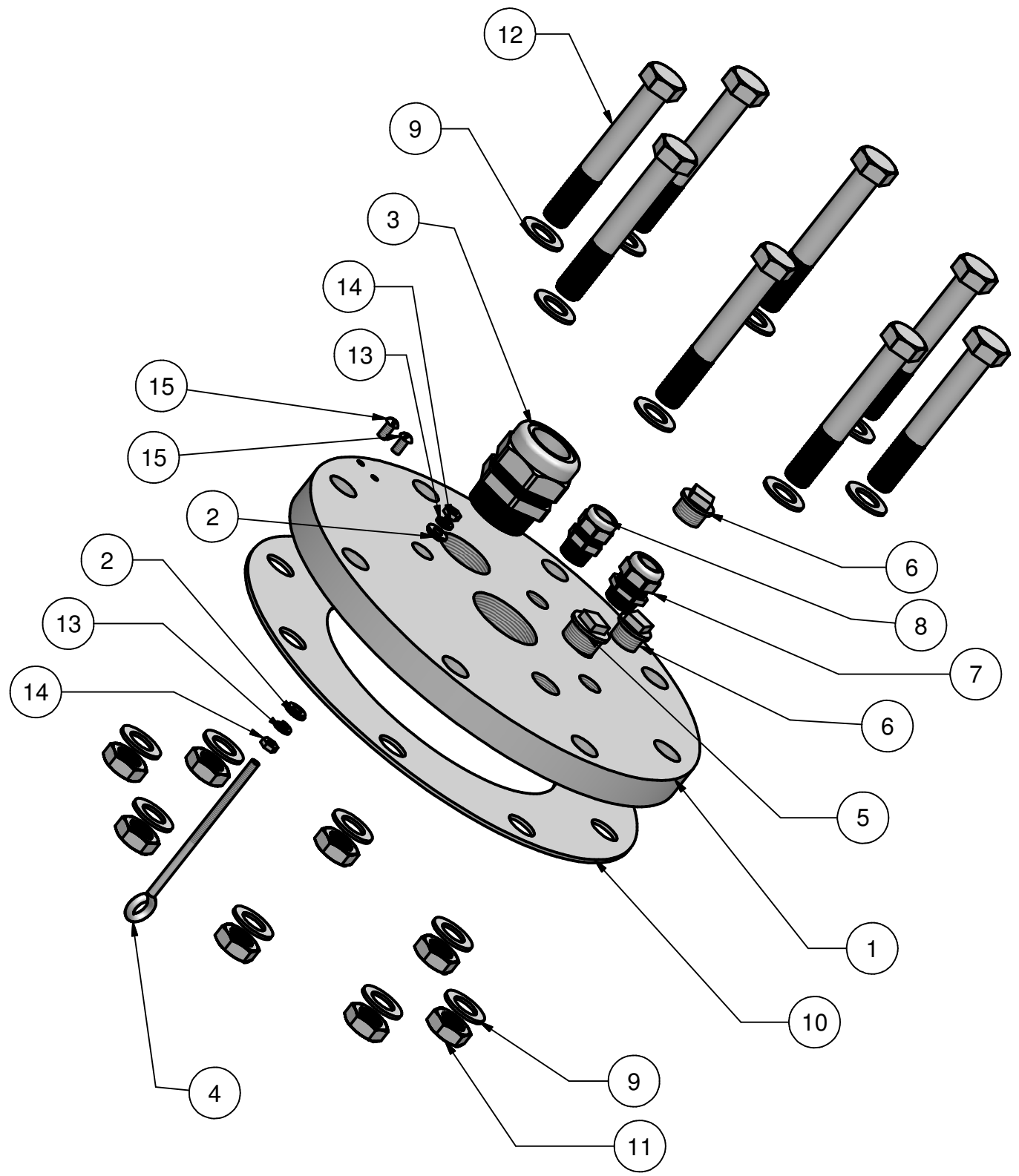
1

4

3


2

1



REVISION HISTORY			
REV	DESCRIPTION	DATE	APPROVED
A	RELEASE FOR PRODUCTION	5/28/2008	SWells

Parts List			
ITEM	QTY	PART NUMBER	DESCRIPTION
1	1	603207	8" FLANGE MODIFIED FOR SEAL
2	2	602512	WASHER SEAL 1/4" SS
3	1	602505	DISCHARGE STRAIN RELIEF/ SEAL
4	1	602504	EYE BOLT
5	1	602509	3/4" PIPE PLUG
6	2	602508	1/2" PIPE PLUG
7	1	602506	EXHAUST STRAIN RELIEF / SEAL
8	1	602507	AIR INLET STRAIN RELIEF/SEAL
9	16	602930	3/4" WASHER FLAT 18-8 S.S.
10	1	602799	GASKET 8" FLANGE FULL FACE BUNA-N
11	8	602806	NUT, 3/4" X 10 TPI 18-8 SS
12	8	602804	BOLT, 3/4" X 10 TPI X 5" L. 18-8 SS
13	2		LOCK WASHER 1/4" SS
14	2		NUT 1/4" X 20 TPI SS
15	2		SCREW 1/4" X 20 TPI X 1/2" L SS

DRAWN SWells	5/28/2008	 <b>DGS</b> Durham Geo Slope Indicator 2175 West Park Court Stone Mountain, GA 30087	TITLE
CHECKED			TR-27604, 8" FLANGE SEAL WITH 2" FNPT ASSEMBLE
QA			
MFG			
APPROVED			
STOCK NUMBER		SIZE <b>B</b>	DWG NO <b>603208</b>
PLUG SEALS		SCALE .X +/- .030 .XX +/- .010 .XXX +/- .004	REV <b>A</b>
			SHEET 2 OF 2