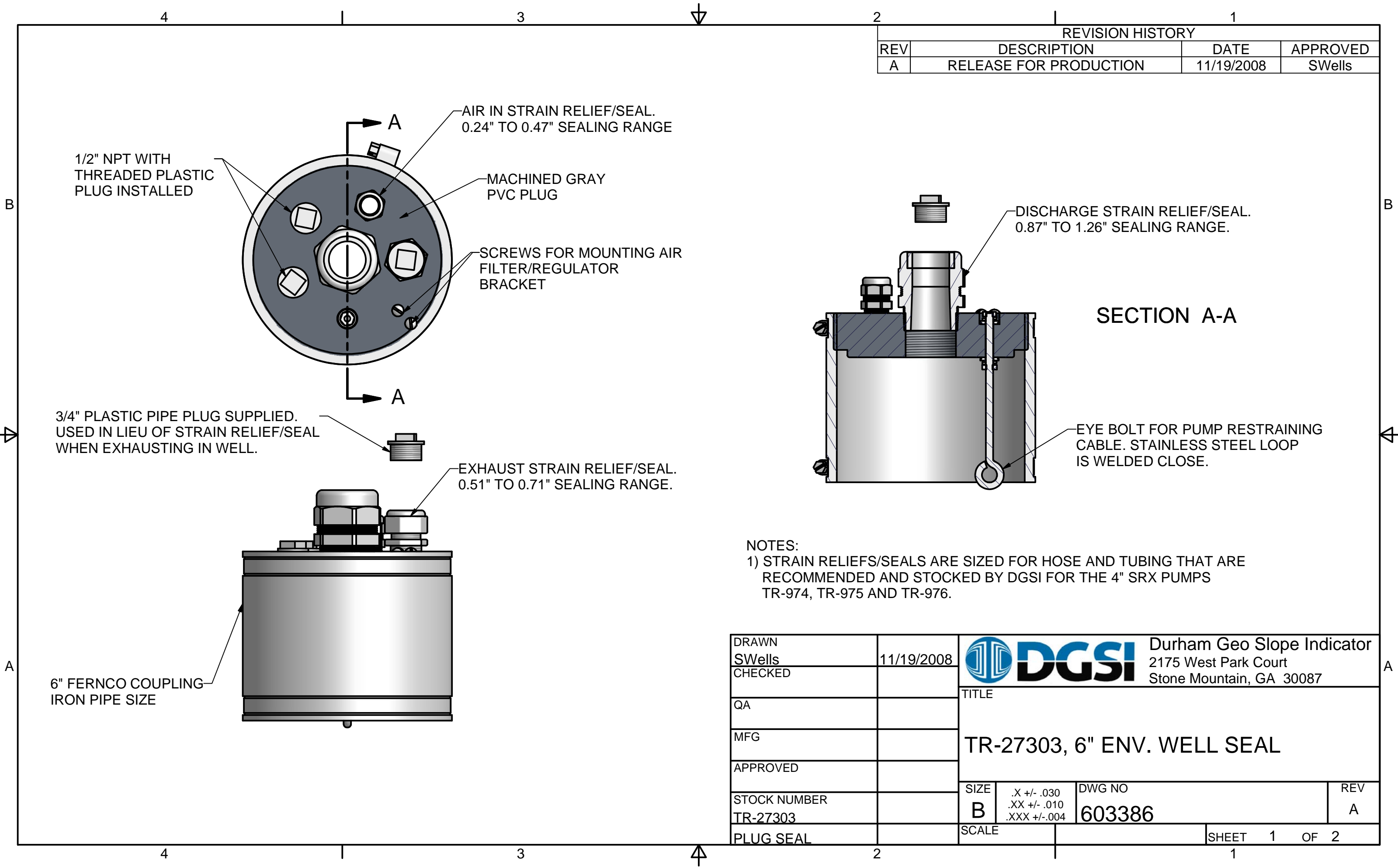

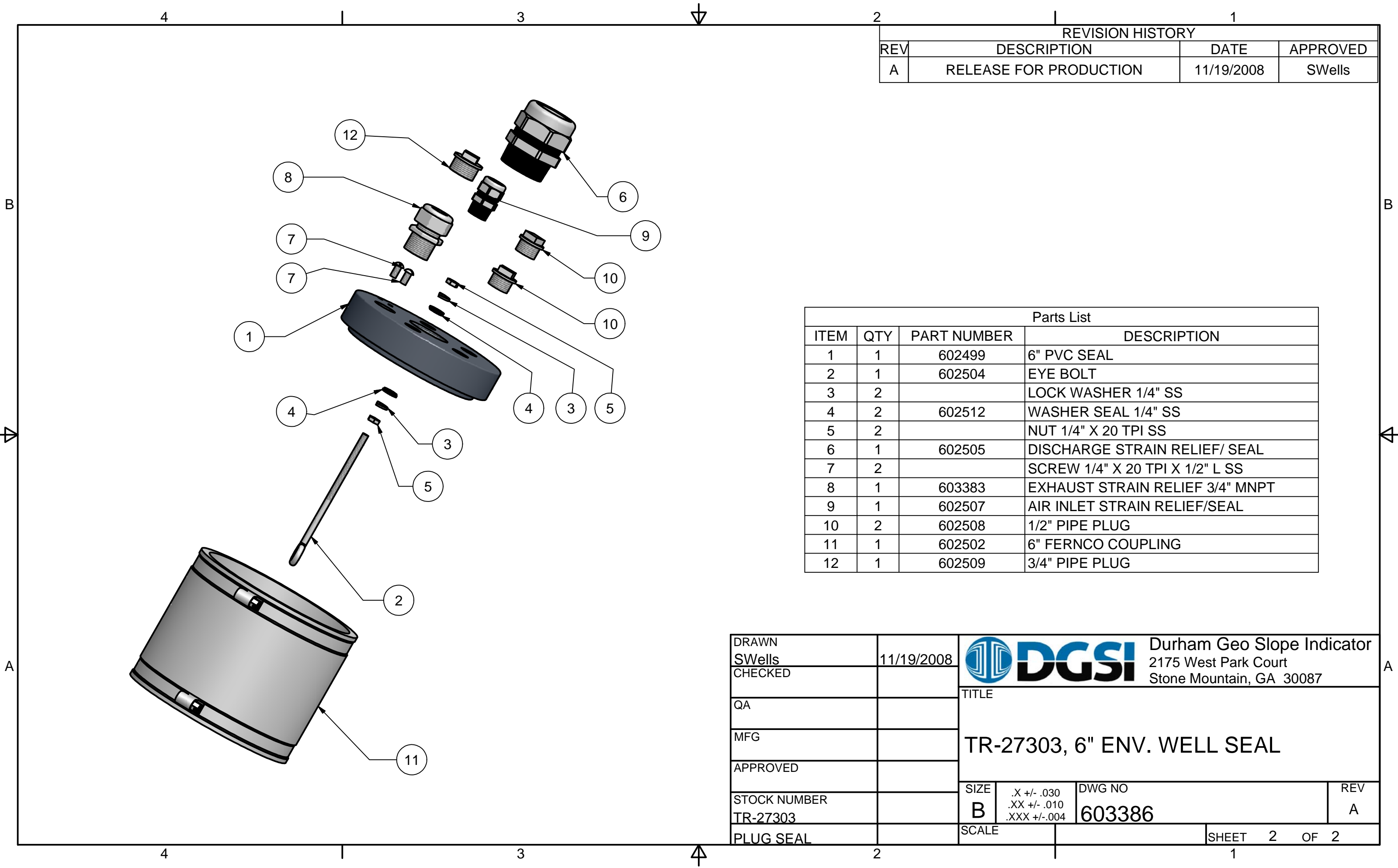


REVISION HISTORY			
REV	DESCRIPTION	DATE	APPROVED
A	RELEASE FOR PRODUCTION	11/19/2008	SWells




NOTES:
 1) STRAIN RELIEFS/SEALS ARE SIZED FOR HOSE AND TUBING THAT ARE RECOMMENDED AND STOCKED BY DGSi FOR THE 4" SRX PUMPS TR-974, TR-975 AND TR-976.

DRAWN SWells	11/19/2008	 DGSi Durham Geo Slope Indicator 2175 West Park Court Stone Mountain, GA 30087	TITLE	
CHECKED			TR-27303, 6" ENV. WELL SEAL	
QA		SIZE .X +/- .030 .XX +/- .010 .XXX +/- .004		
MFG		DWG NO		REV
APPROVED		603386		A
STOCK NUMBER TR-27303		SCALE		
PLUG SEAL		SHEET 1 OF 2		



REVISION HISTORY			
REV	DESCRIPTION	DATE	APPROVED
A	RELEASE FOR PRODUCTION	11/19/2008	SWells

Parts List			
ITEM	QTY	PART NUMBER	DESCRIPTION
1	1	602499	6" PVC SEAL
2	1	602504	EYE BOLT
3	2		LOCK WASHER 1/4" SS
4	2	602512	WASHER SEAL 1/4" SS
5	2		NUT 1/4" X 20 TPI SS
6	1	602505	DISCHARGE STRAIN RELIEF/ SEAL
7	2		SCREW 1/4" X 20 TPI X 1/2" L SS
8	1	603383	EXHAUST STRAIN RELIEF 3/4" MNPT
9	1	602507	AIR INLET STRAIN RELIEF/SEAL
10	2	602508	1/2" PIPE PLUG
11	1	602502	6" FERNCO COUPLING
12	1	602509	3/4" PIPE PLUG

DRAWN SWells	11/19/2008	 DGS	Durham Geo Slope Indicator 2175 West Park Court Stone Mountain, GA 30087				
CHECKED			TITLE				
QA		TR-27303, 6" ENV. WELL SEAL					
MFG							
APPROVED		SIZE	.X +/- .030 .XX +/- .010 .XXX +/- .004	DWG NO	603386	REV	A
STOCK NUMBER	TR-27303	SCALE		SHEET 2 OF 2			
PLUG SEAL							